



**Rutenbeck**  
Telecommunication

*New!*



**Complete built-in and attached solutions  
The “clean” mounting alternatives for the  
workstation**

- easy mounting
- plug-and-play for data and 230 V connection
- for 2 data terminals/telephony
- 5 power outlets
- cable outlet for operation in countersunk status
- neutral design solution for any decor
- establishes order and safety at the workstation

internet

communication, the act of conveying information through a distance, by means of an electromagnetic signal, such as a radio wave or a cable signal, or by other means, such as a telephone system, a computer network, or a satellite system.

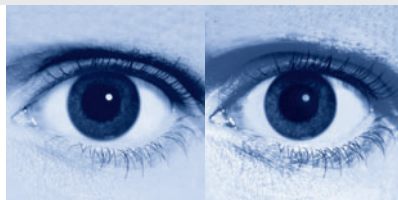
speech



networks

communication, the act of conveying information through a distance, by means of an electromagnetic signal, such as a radio wave or a cable signal, or by other means, such as a telephone system, a computer network, or a satellite system.

words



Niederwirth 1-10  
58579 Schalksmühle  
Germany  
Phone +49 23 55 82-0  
Fax +49 23 55 82-105

www.rutenbeck.de  
mail@rutenbeck.de

The requirements imposed on the flexibility of workstation environments increase on a constant basis. This fact not only has repercussions on the basic installations, it also changes the situation at the workstation itself. For example in modern office environments frequently central supply points are provided in the underfloor area, in the ceiling or other free spaces. The remaining meters to the workstation are then drawn as needed with finished off-the-shelf patch cables. New solutions that accommodate the cable, provide sufficient connections for the terminal units, and at the same time are inconspicuous are necessary to ensure that this does not result in cable chaos at the workstation itself. New Rutenbeck solutions combine energy and data outlets in a single device. Rutenbeck solutions be integrated into a wide variety of built-in environments

including direct installation in a desk. All devices are supplied with power via a supplied cable (2 m) to a Schuko power outlet with earthing contact, in the underfloor area, for example. The data/telephone connection is executed in the same manner with off-the-shelf patch cable. The data outlets satisfy the requirements to Cat.6a and thus are future safe for applications to 10 Gbit. In addition to the standard types offered, a broad spectrum of variants that can be structured modularly to customer specifications (e. g. VGA or audio connections) are available on request. Alternatively the 230 V connection can be implemented via Wago, Ensto-, or Adels plug-in connector systems.



#### Applications

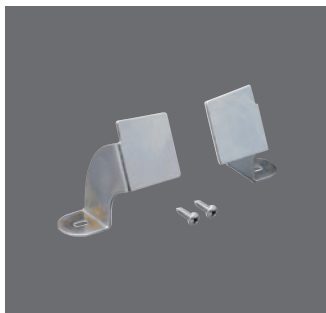
- all private office environments, as well as commercial office environments
- can be universally mounted
  - + on the wall
  - + on the desk
  - + in the desk
  - + under the desk
  - + in the underfloor area



**EGS 5/2**  
**239 101 13**  
Energy column 5/2; 5 power outlets; 2 data outlets; black-silver

**MG 5/2**  
**239 101 14**  
Multi-housing; 5 power outlets; 2 data outlets; black-silver

Technical data	
<b>Housing</b>	Aluminum, anodized, black/silver
<b>Connections</b>	5 x 230 V (SCHUKO power outlet with earthing contact, 45°) 2 x RJ45 (Cat.6a)
<b>Input 230 V</b>	Wieland plug-in connector system (2 m connecting cable included in the scope of delivery)
<b>Input data</b>	2 x RJ45 (Cat.6a)



**Fastening bracket 1x**  
**239 001**  
for MG 5/2

**Fastening bracket 2x**  
**239 002**  
for MG 5/2



**Desk-attachment-clamp**  
**239 003**  
for MG 5/2



**DIN-rail-fastening**  
**239 004**  
for MG 5/2